

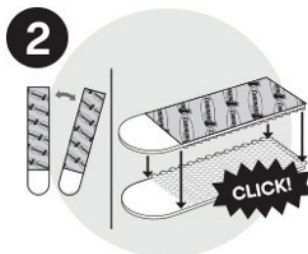
# PANELPix

## Guidelines for Applying "Damage-free" Picture Hanging Strips

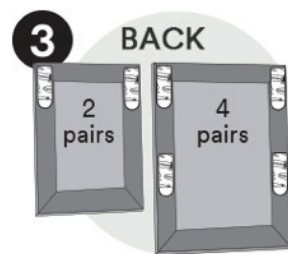
### To Apply



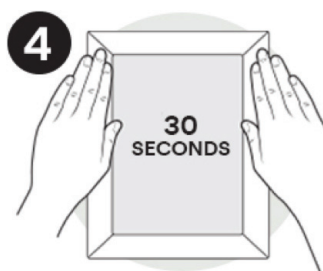
Clean the wall with isopropyl rubbing alcohol by wiping gently. Don't use household cleaners like wipes or sprays because they leave behind a slippery residue.



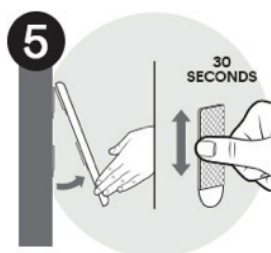
Separate the strips. Press two strips together until they click.



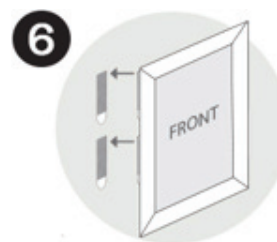
Remove one of the green liners and press onto the frame. Repeat with the other pairs of strips as shown above. Place the lower pair of strips about 2/3 down from the top of the frame.



Remove the remaining liners and press frame on the wall. Press each side of the frame firmly against the wall for 30 seconds.



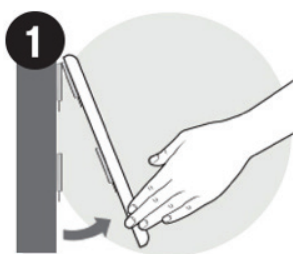
To ensure the adhesive will hold, remove the frame by grabbing the bottom corners and peeling the frame up and away from the wall. Don't pull straight off. Now, press the strips that remained on the wall for 30 seconds. Make sure to press the entire strip.



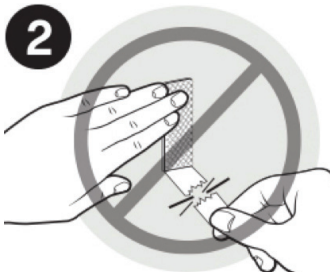
Wait 1 hour before reattaching the frame. Line up the strips on the frame with the strips on the wall. Press until each pair of strips click and lock in place.

**CAUTION: DO NOT use with wallpaper. Wait minimum 7 days after painting to hang frame.**

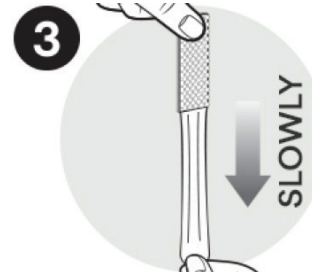
### To Remove



Remove the frame by grabbing the bottom corners and peeling the frame up and away from the wall. Don't pull straight off.



Remember to never pull the strips towards you or peel from the wall. Always pull straight down as slow as you can.



Slowly stretch the strip straight down, keeping your hand against the wall as you go. Keep stretching up to 15 inches.



[www.panelpix.com](http://www.panelpix.com)

Services Hotline  
(852) 2152 0300

32 Styles Ltd | 32 品尚有限公司

Address:  
Unit 7, 5/F, Block B, Hi-Tech Industrial Center,  
491-501, Castle Peak Road, Tsuen Wan, N.T.,  
Hong Kong

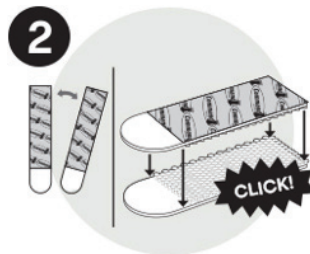
e-mail: [info@32styles.com](mailto:info@32styles.com)

## 無痕掛畫膠貼使用指引

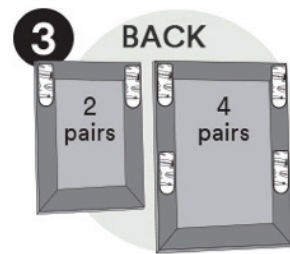
### 應用方法



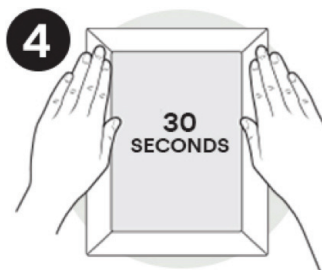
用酒精輕擦牆壁。不要使用家用清潔液，以避免遺留滑膩的殘餘物而影響黏貼效果。



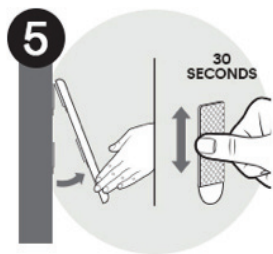
將膠貼分離，然後將兩片膠貼對著擠壓直至發出咔嗒聲。



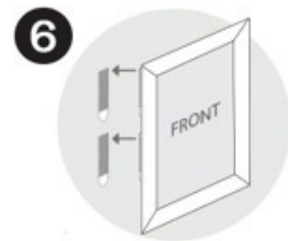
移除其中一張底紙並將膠貼壓在背框適當位置。重覆此動作如圖示。



移除餘下底紙，將框壓向牆壁。並對著原膠貼位置施壓約30秒。



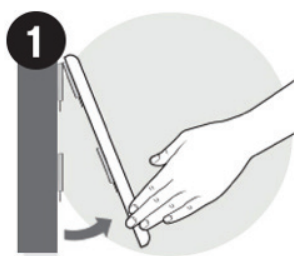
為保證良好緊貼效果，需要作第二次裝貼。扼著框的下方角位向上撕離，見圖示。緊記不要直接正面拉出。然後對牆壁上整片膠貼施壓約30秒。



等待15分鐘以上，再重新對位將框壓貼於牆壁。施壓至發出咔嗒聲，即表示成功安裝。

**注意事項：** 不適用牆紙覆蓋的牆壁。若牆壁為新掃漆，請等待7天以上乾透才可使用。

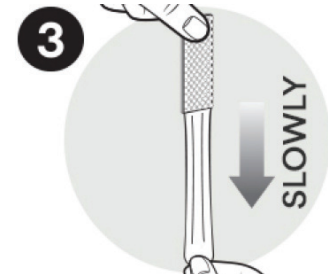
### 移除方法



扼著框的下方角位向上撕離牆壁。緊記不要直接正面拉出。



將膠貼尾部按指示方向慢速拉出。緊記不要直接正面拉出。



手部垂直向下將膠貼拉伸至於15吋，膠貼即可無痕跡地撕除。

